

DREAMS

2021-2022 IMPACT REPORT

South Shore Community Service Association
Bonny Lea Farm & South Shore Work Activity Program



ABOUT US

We have been empowering people of varying abilities with opportunities to *learn, grow and succeed* since 1973.

- person-centred choice-driven individualized approach
- life skills for independent living in their chosen home
- meaningful work opportunities in our social enterprises
- holistic enhanced programs & community engagement

For some, Bonny Lea Farm has been a stepping stone towards independence in the community. For others, we have been home for nearly 50 years.

Our organization has been built by people who believe in personal dignity and worth for those living with varying abilities. We are grateful for all who have given of their time, talents and treasures to further enhance the lives of the people we support. Currently we have 70 full and part-time staff and forty-five participants.

OUR BOARDS

SOUTH SHORE COMMUNITY SERVICE ASSOCIATION EXECUTIVE

John Biebesheimer, President & Chair
Barbie Nunn-Porter, Vice-Chair
Bruce Flinn, Secretary
Cy Mayo, Treasurer

BONNY LEA FARM BOARD OF DIRECTORS

Association Executive Members Plus
Kevin Bezanson Colin MacDonald
Barbara Carthew Monique MacEwan
Colleen Fitzgerald Robert Manuel
Kim Geldart Catherine Robar
Fred Honsberger Sara Whynot
Betty Hughes

LIFE & HONOURARY MEMBERS

Jack Flemming
Anne Flinn
Michael MacMillan
Joe Stackhouse

BONNY LEA CHARITABLE FOUNDATION TRUSTEES

Cy Mayo, Chair
John Biebesheimer
Kim Geldart
David Hilchey
Toby Norwood
Joe Stackhouse
John Tatlow

SOUTH SHORE WORK ACTIVITY PROGRAM BOARD OF MANAGEMENT

Paulette Countway, Chair
John Biebesheimer
Michael Dockrill
Barbara Carthew
Judy Connolly
Kevin McNamara



Overcoming Challenges & Realizing Opportunity

This year has further demonstrated the resilience of our organization. Through the second year of the COVID-19 pandemic, the physical and mental health and wellness of our participants and staff was our top priority.

We had a lot of starts and stops this past year due to changing COVID-19 protocols and measures. Plans made. Plans revised. Plans cancelled. Day Program operating. Day Program closing. Participants isolating. Day Program re-opening. All of this along with roof leaks, vehicle break downs and staff recruitment challenges, were balanced by the determination and resilience of participants and staff who found countless ways and opportunities to continue to achieve participants' goals both here at Bonny Lea Farm and in the community when safe to do so.

We are continuously grateful for the unwavering commitment of our staff who came together to support participants, our Board and management who provided steady leadership, and our community who continued to faithfully support our work.

Our Board spent time reviewing and refreshing many of our operating and governance policies. While some facility upgrades were completed this year others, including a new roof for our day program building are on the calendar for the upcoming year. Plans are approved and funds are being raised to build our dream Home to Stay for participants who would like to stay at Bonny Lea Farm as they age, as well as a new home in the community. To ensure that we are ready for the future, we activated our Property Renewal Committee to create a short, medium and long-term plan for infrastructure renewal and will Dare to Dream in creating our new strategic plan as we approach our 50th anniversary in 2023.

We're thankful for your support over the past year and hopeful for the future,



John Biebesheimer
President and Chair



Karen Lake
Executive Director

Mission

Bonny Lea Farm is committed to empowering special needs individuals, providing opportunities to experience faith, self-respect, love for one another, dignity, integrity, productivity, and responsible community living.

Vision

Each person who comes to Bonny Lea Farm has the chance to learn, grow and succeed.

PERSONAL DIGNITY & WORTH THROUGH PRODUCTIVE LIVING

PERSON-CENTRED

Our residential, vocational and enhanced programs are built for the participants who live and work here using a person-centred approach:

- valuing relationships based on dignity and respect for individuals
- empowering people to make informed choices that feel right for them
- supporting the well-being of the person as a whole (emotionally, physically, mentally and spiritually).

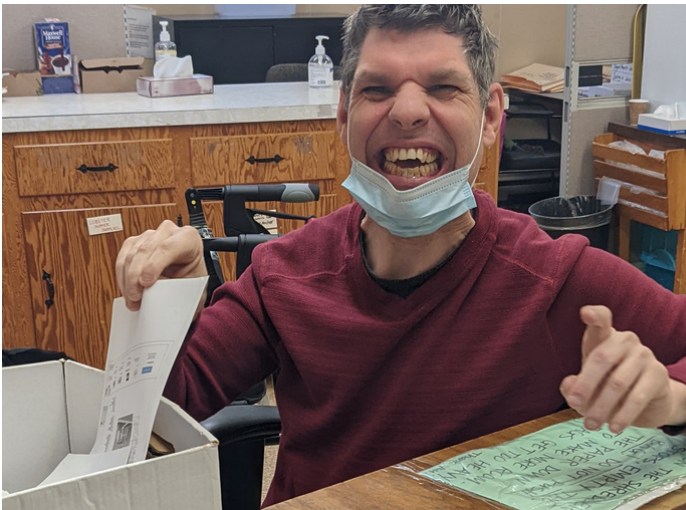


Experiencing New Opportunities

Last year we shared DJ's achievements and goals since moving to Bonny Lea Farm.

This year he built on those successes and achieved his goal of working in the kitchen where he takes on many tasks.

At home he is always looking for ways to help out and has strong relationships with his housemates.



Growing through Change

This year Douglas changed work crews at Day Program. He is happy with his decision, enjoys the work, and is excelling as part of the Small Contracts & Shredding Team.



Easing from Work to Retirement

Debbie moved from a six person group home to a three person small option home.

She is now semi-retired. On her days off she is active in the community, where she attends Chester Art Centre's Creative Seniors; goes new places and meets new people; and fulfills her passion for horses by visiting local farms, spending time with the animals and helping out where she can.



Meaningful Work

Amanda comes from the community to work in our Greenhouse & Garden crew, where one of her tasks is making our popular Hot Pepper Jelly. Our many closures over the past two years disrupted her work.

"It is good to be back."

- Amanda



Embracing the Everyday

Each day participants engage in the day to day activities of living while learning life skills with guidance from their residential counsellors. Liz, Joanne and Catherine are doing the shopping for their home.

A few Participant Goals

- ✓ Toby and Josh each wanted to go to the movies and they did.
- ✓ Anton wanted to spend time with horses and he did.
- ✓ Laurie-Anne wanted to try working in Wipers and really likes it.
- ✓ Lacosta wanted to bike more and she does every day!
- ✓ Hansi hoped to swim with Special Olympics and he has.

ORGANIZATIONAL GROWTH

To ensure that we are delivering the best opportunities possible for the people who live and work here, we look for ways to improve.

Good Governance

To ensure that we are applying governance best practices, the Board of Directors engaged an external review of our policies and procedures. At the same time, our Personnel and Policy Committee reviewed and updated several Board, Personnel and Participant policies.

Investing in our People

We value the dedication and commitment of our skilled staff. Throughout the year, staff were offered Mental Health in the Workplace training, first aid training, MANDT and RICK training.

With recruitment of staff being a challenge, we now offer our own training program for suitable candidates.

Expanding Opportunities

We are planning to re-open The Shop on Central, located at 227 Central Street in Chester. The participants are looking forward to working at this community location after two years of closure due to Covid. We have also secured additional space at this location to offer participants more opportunities for community connections.

PERSONAL DIGNITY & WORTH THROUGH PRODUCTIVE LIVING

SOCIAL ENTERPRISES

Our six social enterprises provide products and services to local businesses and the community, while offering participants meaningful work and vocational skills development.



For Dan, making kindling meant the achievement of one of his workplace goals. He has become an important part of the team, operating the switch on one of the splitters. This year he won the Suzie McClung Award for demonstrating achievement in the workplace.

"It's good."

- Dan

"I bought two bundles of Kuttin Kindlin at Gows Home Hardware. They're terrific! A good size for starting a fire & the bundles even come with handles. Great products and so reasonably priced!"

- Gerrie



"We carried Bonny Lea Farm's Kindling for many years before Covid. We are so excited to have it back in the store. Customers missed it. It's great quality and it's great to support locally."

- Amanda Fancy

Gow's Home Hardware



WWW.BONNYLEAFARM.CA

BUILDING COMMUNITY

Bonny Lea Farm values its place in the community and we hear from our neighbours that the feelings are mutual and the benefits are reciprocal.



Caring for Others

We partnered with Starfish Reunites to raise funds for Syrian refugee resettlement. Our Woodwork team built cedar planters, which were then delivered by volunteers to 14 local artists who applied their creative talents, before they were auctioned off.

Bonny Lea Farm hosted Covid-19 vaccination clinics for people living in Lunenburg & Queens county.

On Truth & Reconciliation Day we held a day of learning, reflection, and remembering the lives of Indigenous children who died while in the residential school system and those survivors whose lives were changed forever.

"I liked being busy building & sanding the planters. I learned how to use the saw and drill. It is good doing things for other people."

- Morgan

Caring for the Environment

We helped create habitat for bees and butterflies as part of the national Butterflyway Project, by planting a Butterflyway pollinator garden.



A HEART FOR GIVING

For some, Bonny Lea Farm has been a place of growth for nearly 50 years. This is the case for Marci and her family.

Last year Marci Elliott, invited our Fund Development Director, Liz, for tea and a conversation about what Bonny Lea Farm has meant to her.

"Bonny Lea Farm means everything to me. It is the best thing that could have happened for Jan. It has given her meaning in life. It has been wonderful. Originally, I would drive her to New Minas to school. Then she attended New Ross school. When they started building Bonny Lea Farm in 1972, Jan went to the day school's temporary location at the Mason's hall in Chester.

When she turned 19, Jan was away from Bonny Lea Farm for a little while because it was before they offered an adult program. She wasn't happy living at home with nothing to do. I think there may have only been one year that she wasn't at Bonny Lea Farm, because once the vocational and day program for adults started, she has been there ever since. Jan commuted to the day program until she was 25, when she moved there to live.

Bonny Lea Farm has been wonderful as a home for Jan. I don't know what we would have done without it really."

When Marci finished sharing her story, she paused and then explained that she had recently sold the family cottage and wanted to discuss making a gift that would leave a lasting legacy for the people who call Bonny Lea Farm home. She decided to make a donation towards supporting participants to age in place here at home at Bonny Lea Farm.

Her gift on behalf of herself and her late husband Eugene, along with others who are supporting our Home to Stay Capital Campaign, is making it possible for us to move forward with our plans to build our dream Home to Stay.

We were sad to say good-bye to Marci in the spring of 2022. We know she would be happy to learn that will be breaking ground later this year.



MEMORIALS & TRIBUTES

Changing a life by celebrating a life

Many of you chose to change a life by celebrating a life. You gave in celebration of friends, family, participants, staff, volunteers and community members. We are honoured that you thought of us during your time of grief and happiness.

IN MEMORY

Aunt Imelda
Ted Cleather
Borden Conrad
Allan Conrod
Patricia Currie
Catherine Drage
Eugene Elliott
AM (Tosh) Finney
Betty Flinn
Suzanne Flemming
Greg Forward
Joan Fraser
Kevin Healy
Betty Hughes
Shirley Lane
John Lazier
Bill McCany
Gerald Murphy
Bill Nauss
Susan Shore
Louise Smith
Lois Tomlinson
Myrtle Pineo
Joan Publicover
Holly Van Barneveld
Rena Walker
John Whitehouse

IN HONOUR

Felix & Barbara
Debbie Austin
Barbara Barrow
Kevin Bezanson
Joanne Boswell
Judy Connolly
Joanne Eisnor
Liz Flemming
Duncan Gillis
Janice Jackson
Janet MacDonald
Stacey MacDonald
Ocean Contractors Ltd.
Gertrude Pickrem
Raye Potter
Alicia & Robert Risley
Karen Robertson
Greg Varga

Memorial & Tribute Gifts

When online or mail in donations are made in memory or in honour of someone, a personalized card may be sent on your behalf to the family either by mail or email.

If you would like to discuss how to honour a loved one, please reach out to Liz at 902-277-0986.

GENEROSITY & GRATITUDE

Thank you!



We rely on funding from the Department of Community Services and the generosity of our community of supporters who donate time, expertise, financial gifts, and other items ranging from furniture and cars to houses in support of our work.

When you give to Bonny Lea Farm, you are empowering people living with intellectual disabilities.

Every day at Bonny Lea Farm, 36 lives are lived, nearly 70 dedicated staff make a difference, 140 meals are prepared, connections with families and friends made, skills taught and products made in our social enterprises.

- **Annual Campaign** donors gave a record \$96,000 towards our program and operating costs.
- **Drive-Thru Lobster Fundraiser** sold nearly 380 lobsters and raised \$35,000 through sponsorships and ticket sales.
- **Bonny Lea Farm Annual Benefit Golf Tournament** hosted 144 golfers at the Chester Golf Club and raised \$36,000 through team registrations and sponsorships.
- **Community Champions** from Mahone Bay to Halifax held fundraisers on our behalf. Thank you to Tim Hortons Mahone Bay SMILE Cookie Week; Black Harbour Distillery; Bryden Robertson CIBC Private Wealth Management; and Full Circle Realty Group!
- **Home to Stay** donations to our capital campaign have already reached \$2.2 million towards building our dream home for participants who require a higher level of support.
- **Gifts of Securities** (Stocks and Shares) – 6 gifts of securities were made to Bonny Lea Farm this past year. Transfers of appreciated stocks and shares can provide benefits to you in tax savings and a great benefit to a charity you care about.

Generosity Fuels Automatic Generators

Thanks to the support of the community and Pew Charitable Trust we were able to install automatic generators for all nine of our homes. Baker House, right, was cozy and comfortable during one of the power outages this past winter. We were also able to make upgrades to two bathrooms in our homes, paint the common areas in three homes, and replace many windows and some furniture.

Making an impact with Planned Giving

A planned gift is any donation that is arranged in the present to be received in the future.

Often donated through a will, trust, life insurance, RRIFs, securities, or real property, planned gifts are a way to continue your support of Bonny Lea Farm in the future.

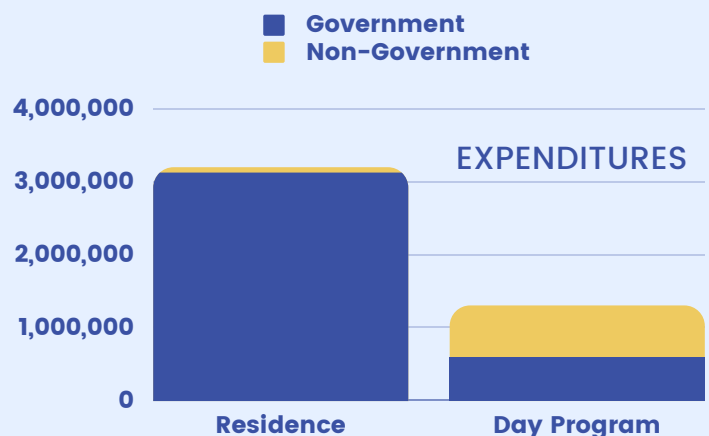
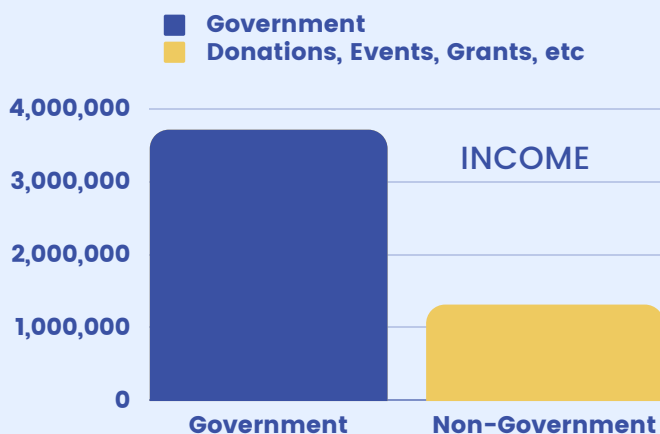
Bonny Lea Farm is part of Will Power, a national effort to raise awareness of the transformative impact of planned gifts.

To learn more about planned giving and its tax benefits now or in the future, contact your accountant, financial advisor, lawyer or visit www.willpower.ca/bonnyleafarm



FINANCIAL OVERVIEW

The Department of Community Services and the Pew Charitable Trust are our main funding partners. Delivering our mission is also made possible by our donors and social enterprises. Our volunteer Board of Directors provides financial oversight and approves our annual budget.



1. Audited Financial Statements are available on request.

2. Fundraising totals include donations to our Home to Stay capital campaign, which are recorded in our Financial Statements as deferred income this year and will be reported in our financial statements as revenue in the year they are spent.



LOOKING AHEAD

Over the years Bonny Lea Farm has never stopped dreaming, growing and changing to meet the needs of people with varying abilities. We are committed to continuing to explore new opportunities for renewal and transformation.



24/7 Barrier-free home that never closes

Specialized mobility supports

Ability to support those with light medical needs

HOME TODAY. HOME TO STAY.

A model for barrier-free & supported living for adults with intellectual disabilities

We are excited that in 2021-2022 we received approval from the Department of Community services for two new homes:

- one fully accessible home at Bonny Lea Farm to provide a higher level of support for people at any age or stage of life, and
- one fully accessible home in the Village Chester funded by the Department of Community Services.

Thanks to our campaign committee and early supporters we are already more than half way to our goal of \$4.5 million to build our dream Home to Stay for participants who wish to age here at home at Bonny Lea Farm, and plan to break ground later this year.

Visit the website below to learn more about this project and see how you can help make this dream come true!

Campaign Committee

Jack Flemming & Colin MacDonald (Co-Chairs)

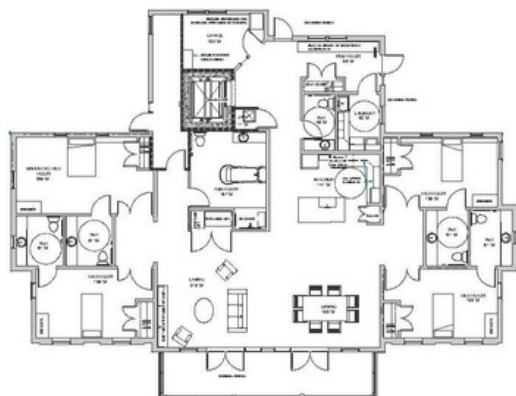
John Biebesheimer, Rick Emberley, Kim Geldart, Lisa Murphy

WWW.BONNYLEAFARM.CA/HOMETOSTAY/



"Bonny Lea Farm has been my home for nearly 40 years. I do not want to have to leave if my needs change as I age."

- Rose



50th ANNIVERSARY CELEBRATIONS

2023 will mark Bonny Lea Farm's 50 years since our beginnings as a school for children with varying abilities. Stay tuned for opportunities to join us as we celebrate our roots and growth.



DARE TO DREAM

Ensuring we are ready for the next 50 years, we are embarking on a visioning process for the renewal of our people, places and programs.



SOUTH SHORE WORK ACTIVITY PROGRAM

This past year has been one of opportunity and growth through transition and transformation for South Shore Work Activity Program. The program has also been challenged by Covid restrictions impacting our in-person programming and enrollment numbers.



Overcoming Barriers to Employment

Over the last year 25 SSWAP participants enhanced and practiced employability skills like motivation, accountability, presentation, team work, adaptability, stress management, problem solving, as well as, personal success skills, computer skills and workplace essential skills.

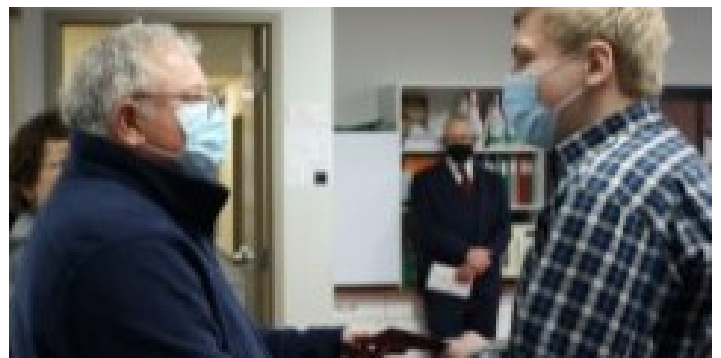
Many discover abilities and confidence that they did not know they had and with that, they open doors to explore work options and gain employment.

SSWAP had 25 participants in 2021-2022

Program Renewal

The Department of Community Services completed a three year review and renewal of Work Activity programs across the province:

- Updating and aligning the province's six programs
- Refreshing supports and opportunities for unemployed people to reduce their barriers to employment.
- Committing to a three year funding agreement for the first time since the program began in the early 1980s.



The "Billy Fund"

In recognition of the impact our late colleague Bill Nauss had on others, the Board of Directors created the "Billy Fund" to support individual participant needs, using funds donated in memory of Bill and other earned funds. Bill would often help when there was a need, most often without telling what he had done.

The impact on participants' lives goes beyond their completion of the program or their employment status.



"The program helped me get on the right path in life and work to the best of my ability.

They held me accountable and I was able to practice employability skills and establish a routine."

- DYLAN

"I learned new skills and improved old ones. I liked the Life Skills program because it helped me to be more open and outgoing. There is an increase in my self-esteem and confidence."

- IVY

Community Job Placement Partners

We are grateful to the following locations for offering participants job placements to explore career possibilities and gain experience:

- Betty's at the Kitch'in' - Kitchen Helper
- Bonny Lea Farm, Residential Office – Office assistant
- Curry Express – Food Preparation
- Fresh Cuts – Maintenance
- Napa Auto Parts (Chester) – Inventory and Customer Service
- Office of Danielle Barkhouse, MLA – reception
- Osprey Ridge Golf Club – Grounds maintenance
- Scotia Business Centre – Office Work
- The River Pub – Food Preparation
- Sherwood Golf & Country Club – Grounds maintenance
- Sweet Spot Oceanside Farm – Horticultural assistant
- YMCA Day Care – Child Care Assistant

11 participants were hosted by local businesses
8 participants are now employed

"The work placements are very valuable. Participating in the SSWAP program increased my confidence in what I am capable of doing."

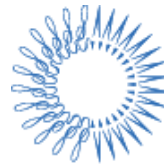
- KAITLYN



WWW.SSWAP.CA

South Shore Work Activity Program is funded by the Department of Community Services.

Thank you!



PEW

The John & Judy Bragg
Family Foundation



J & W Murphy
Family Foundation



Tim Hortons

Ecclesiastical Insurance

The Marguerite Hubbard
Charitable Foundation

The MacKenzie
Family Foundation



Bonny Lea Farm
5 Collicutt Road
PO Box 560
Chester NS B0J 1J0

902-275-5622
www.bonnyleafarm.ca
facebook: bonnylea.farm



**South Shore Work
Activity Program**
23 Collicutt Road
PO Box 187
Chester NS B0J 1J0

902-275-5585
www.sswap.ca
facebook: SSWAP.ca